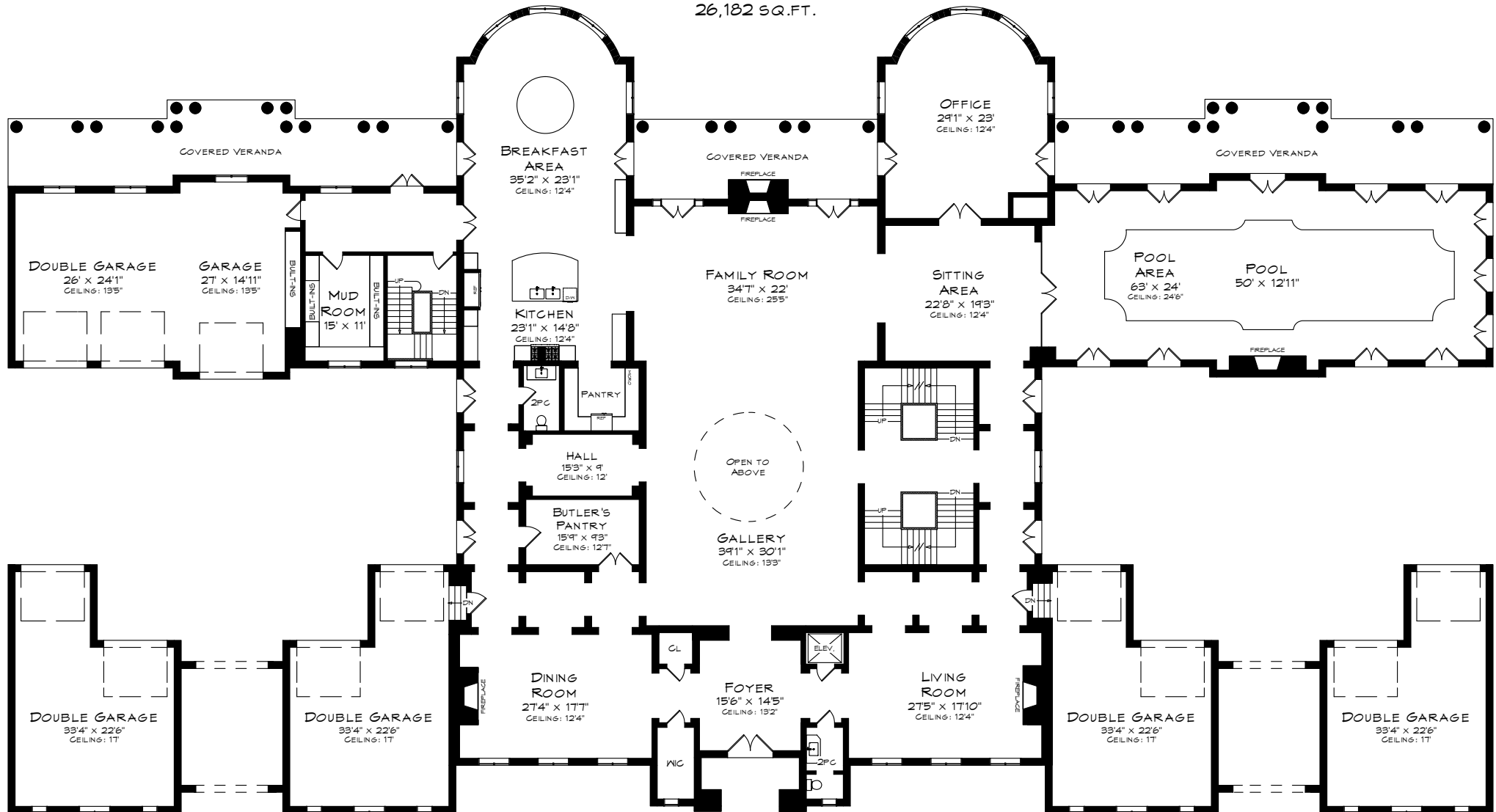


# 2275 DOULTON DRIVE

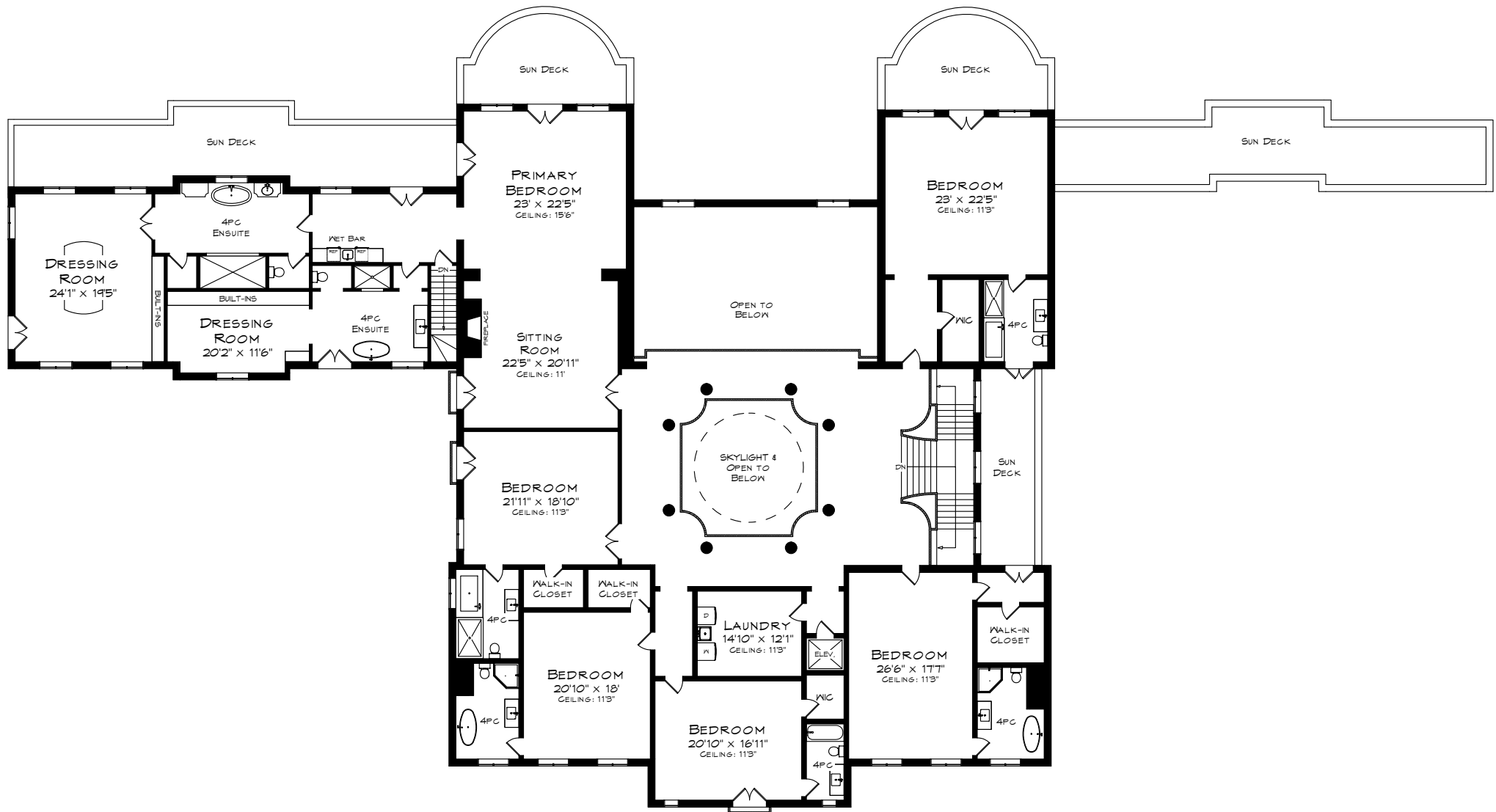
TOTAL SQUARE FOOTAGE  
26,182 SQ.FT.



MAIN LEVEL  
10,054 SQUARE FEET  
+ 4,046 SF (GARAGES)

10' = 10'  
Measurements may not be 100% accurate  
and should be used as a guideline only.  
September - 2022

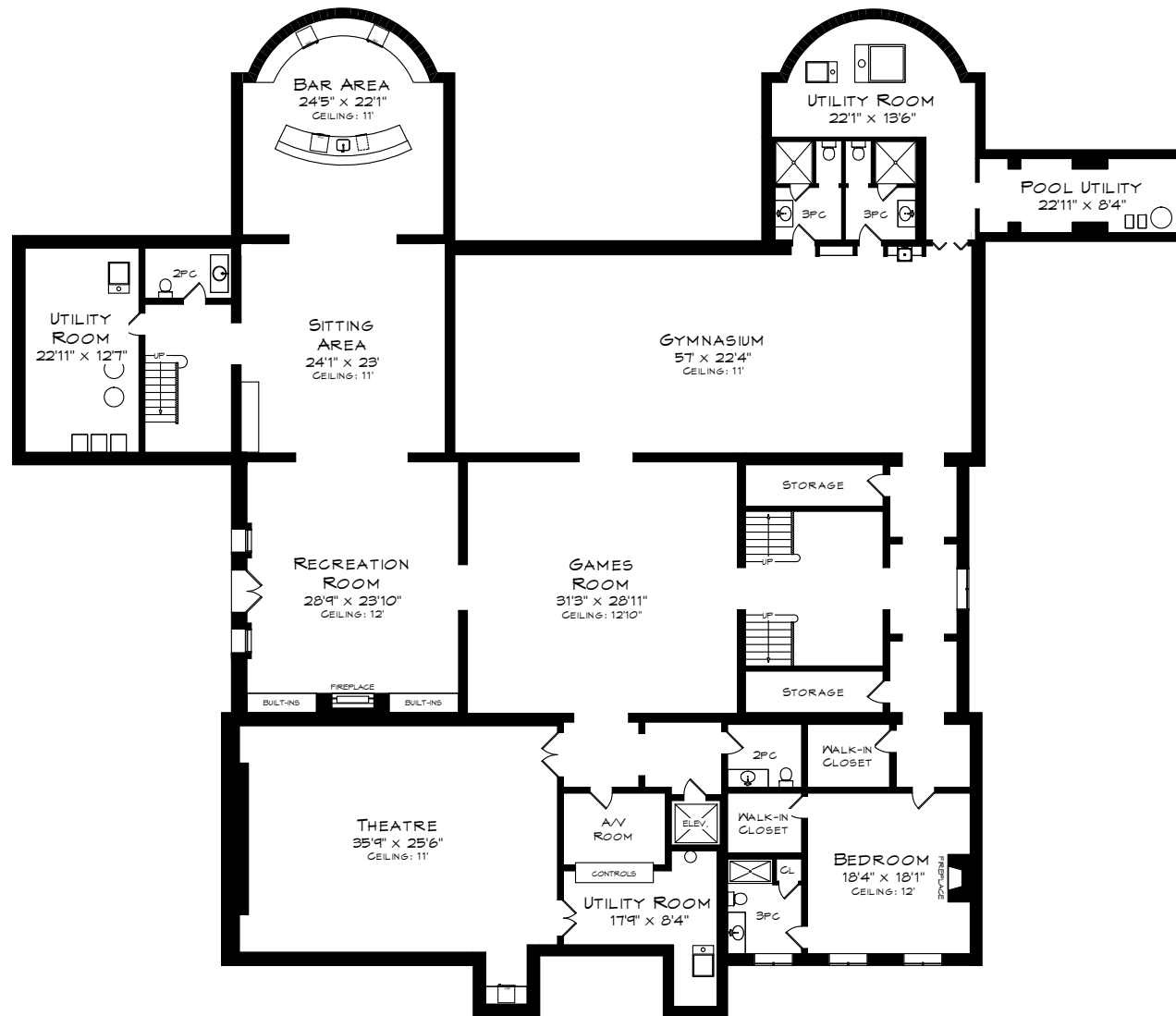
# 2275 DOULTON DRIVE



UPPER LEVEL  
7,401 SQUARE FEET  
+ 1,102 SF (OPEN TO BELOW)

10'  
Measurements may not be 100% accurate  
and should be used as a guideline only.  
September - 2022

# 2275 DOULTON DRIVE



LOWER LEVEL  
8,727 SQUARE FEET

10'  
Measurements may not be 100% accurate  
and should be used as a guideline only.  
September - 2022